

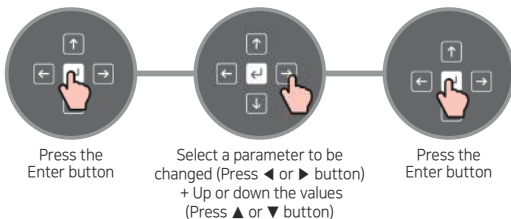
Display & Control Panel

Max. RPM	4,000 rpm
Max. RCF	3,243 xg
Timer	< 100 min, Pulse continuous
ACC / DEC Ramps	5/6



Setting Run Parameters

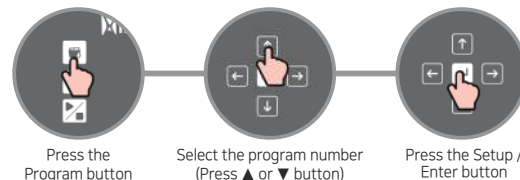
(RPM / RCF / Time / ACC / DEC / Rotor ID)



RPM setting mode : RPM flashes
RCF setting mode : RCF flashes
Time setting mode : 00' 00" flashes

Rotor ID mode : Rotor flashes
ACC / DEC setting mode : ACC / DEC flashes

Saving / Calling Up a Program



Save Select the program number → Press the Program button → Set the run parameters → Press the Enter button

Call up Select the program number → Press Setup / Enter button

Cautions For Use

Before Operation



Check the Accessories for Abnormalities

Check the rotor, buckets and tubes are free of scratch and crack before operation.



Check the Rotor Locking

Check the rotor is firmly tightened onto the motor shaft.



Balancing the Centrifuge and Rotor

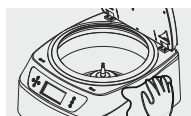
After relocating the device or loading the rotor, balance them by using a leveler. If necessary, level the device by adjusting the 'Leveling foot' on the bottom of the device.



Load Tubes Symmetrically

Load tubes symmetrically into the rotor with identical amount.

After Operation



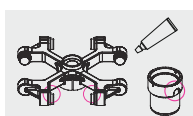
Cleaning

Clean the chamber and rotor by wiping with a cloth soaked in mild detergent and dry completely.



Check the Cushion Rubbers

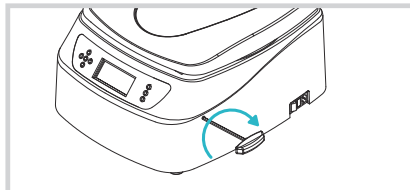
Check the cushion rubbers in the sleeves (AL15-12, AL15-24) before use. When reinserting, must insert it in the correct direction.



Care of Swing-Out Rotor

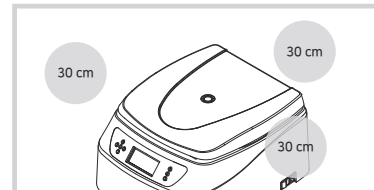
Spread the grease lightly on the bucket where it contacts the rotor and the pivot.

Maintenance



Emergency Lid open

If the centrifuge lid cannot be opened, insert the provided T-wrench into the emergency release hole on the right side of the device and turn it clockwise. (Before activating emergency open, switch off the device and wait for the rotor to stop.)



Allow a Safety Clearance of 30 cm

Allow a safety clearance of 30 cm around the centrifuge during operation.

Electrical Safety



Check the Line Voltage

Connect the device to voltage sources which correspond to the electrical requirements on the label attached to the device.



Grounded Outlet

Check the wall outlet is earth grounded, surge-protected and can supply enough power.



Switch Off the Device

Switch off the device after use. Unplug the power plug before cleaning or unused for a long period of time.

Rotor

Fixed-angle Rotors

AL15-12 12 x 15 mL / Max. 4k (Rotor ID.3)

AL15-24 24 x 15 mL / Max. 4k (Rotor ID.4)

Swing-out Rotors

S50-6 6 x 50 mL Round / Max. 4k (Rotor ID.2)

S85-4 4 x 85 mL Round / Max. 4k (Rotor ID.1)